

SPLUNK® for iPad

Interact with dashboards, alerts, and collaboration tools optimized for iPad

- **Investigate anywhere.** Get access to Splunk data and dashboards on a large portable screen.
- **Annotate and collaborate with your team.** Mark up your charts and easily share your findings.
- **Keep a data journal.** Take notes and record relevant historical context to understand your data better.
- **Deploy with ease.** Splunk for iPad supports SAML authentication and popular mobile device management (MDM) providers.

Are you busy and on the go but still need to dig into your data and view your dashboards? Splunk for iPad is designed for and dedicated to what's unique and great about the iPad, taking full advantage of the large yet portable display. Whether you're a C-suite executive looking for a synthesized overview, a team collaborating to view dashboards of your operations, or simply a user wanting to view your data on a larger screen without having to pull out your laptop, turning data into doing has never been easier.

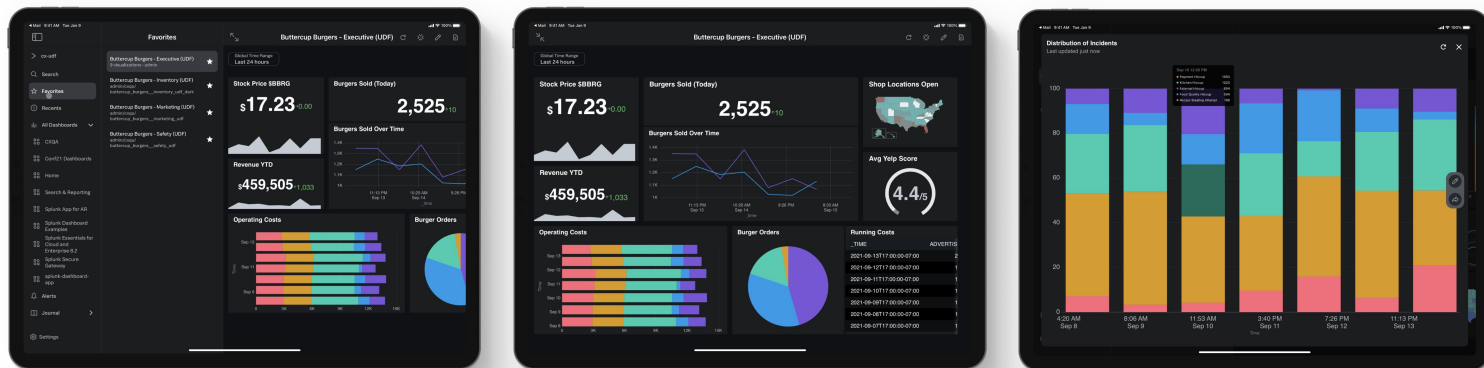


What can Splunk for iPad do for you?

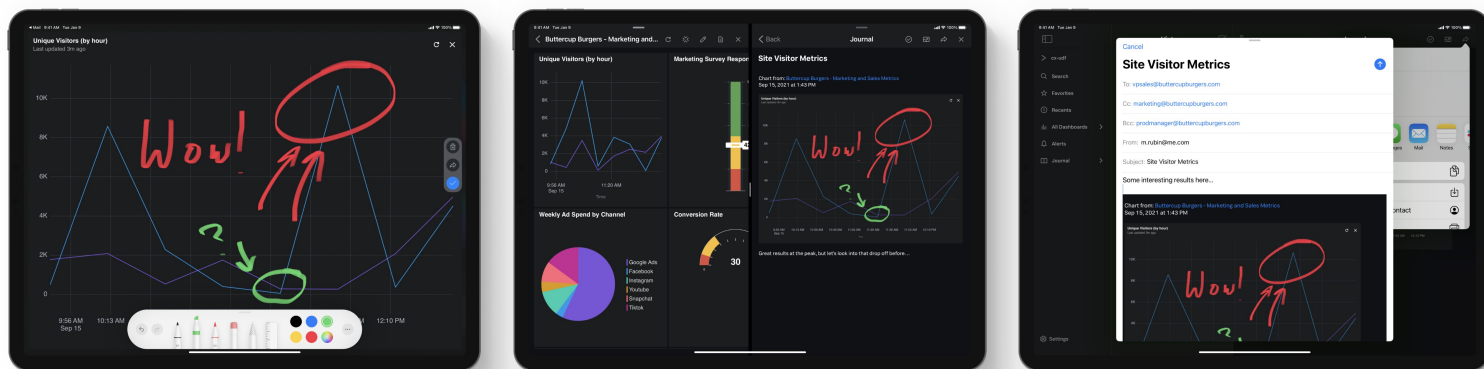
- **Boost team collaboration** by annotating dashboards, creating notes, and sharing your findings.
- **Increase productivity** by working with multiple apps, charts, and notes at once.
- **Gain insights and improve time to resolution** by delivering live Splunk data directly to your departments' devices.

Splunk for iPad is available to all Splunk Cloud or Splunk Enterprise customers. Make better, faster decisions and make it simple for anyone to access, explore, and understand Splunk data on-the-go.

With our **flat three-column navigation**, accessing your dashboards and alerts is now just a tap away. No more flipping through multiple screens to find your data. With the iPad's large screen size, you can **stay in context** as you view your dashboards in all their detail.



Splunk for iPad visualizations are optimized for the iPad so you can quickly track and understand important data. We support **multitasking**, so you can work with multiple apps, charts, and notes at once. **Annotate your dashboards, drag and drop relevant charts** to contextualize your notes, and **instantly share** with your team.



Splunk Secure Gateway

Administer and manage your fleet of devices at scale with Splunk Secure Gateway. Splunk Secure Gateway is a default-enabled app in Splunk Enterprise 8.1+ and Splunk Cloud 8.1.2103+. It facilitates communication between mobile devices and Splunk platform instances using an end-to-end encrypted cloud service called Spacebridge. Spacebridge has been certified to meet SOC2, Type 2 and ISO 27001 standards and is HIPAA and PCI-DSS compliant.

You can also use Splunk Secure Gateway to set up SAML authentication so organizations can use single sign-on (SSO) for identity and access management.